

**TwinVision® ELYSÉ®**, a Windows®-based proprietary software program, enables transit authority personnel to access TwinVision® electronic destination sign system programming features.

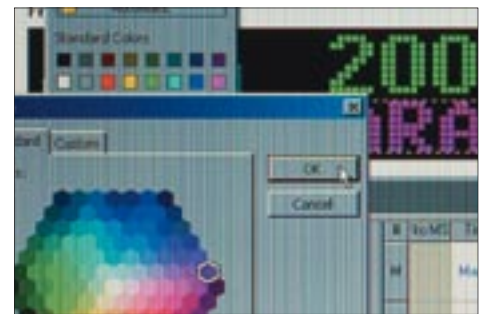
Although programming tasks typically are handled by computer specialists, the software's easy-to-use, point-and-click features permit non-programmers to successfully change electronic destination sign system messages using hundreds of ADA-compliant fonts and graphics. The software also has a feedback feature that simultaneously shows text appearing on the transit vehicle's front sign within the *Operator's Console Unit*, eliminating the need for the transit operator to physically check the sign's text.

## Features

- Windows® 2000 or Windows® XP programming software capabilities
- IBM 486 or higher PC/AT capacity
- Intuitive, context-sensitive help features
- PCMCIA memory download technology

## Benefits

- Easy data entry and editing
- One step inputting for all signs
- All databases in one software application
- Single step scrolling capability
- Easy printing and viewing options
- Preprogrammed fonts and symbols
- Ability to create custom fonts and symbols
- On-site training and technical support



TwinVision® ELYSÉ® software offers a variety of fonts and symbols in a plethora of color combinations to help you more effectively communicate transit vehicle routes on TwinVision® electronic destination sign systems.



TwinVision® ELYSÉ® software enables users to quickly change route numbers and messages displayed on TwinVision® electronic destination sign systems.



## Operator's Console Unit

The *Operator's Console Unit* controls all operating features of TwinVision® electronic destination sign system products. Its keypad is designed for easy entry in either decimal or hexadecimal format, and its PCMCIA card slot enables upload of destination data prepared with the TwinVision® ELYSE® software.

### Features

- Multi-key conductive rubber pad keyboard
- Two-lines of 20-character capability
- Password protection
- Contains an audio annunciation system
- Standard J1708 interface
- Optional IBIS interface with an auxiliary RS232 (DB9) port
- Optional wireless uploading capability

### Benefits

- Easy to view and update display messages
- Automatic and manual text selections



The TwinVision® Operator's Console Unit controls all operating features of TwinVision® electronic destination sign system products.

The TwinVision® Operator's Console Unit keypad enables easy entry of both system hardware and electronic destination sign system software changes.



## TwinVision na, Inc.

4018 Patriot Drive, One Park Center, Suite 100 • Durham, NC 27703 | P.O. Box 14068 • Research Triangle Park, NC 27709-4068  
Phone: (919) 361-2155 • Fax: (919) 361-9635 • [www.twinvision signs.com](http://www.twinvision signs.com)